



# AM50-B Dual Arm Swingout Mount for Flat-Panel Displays

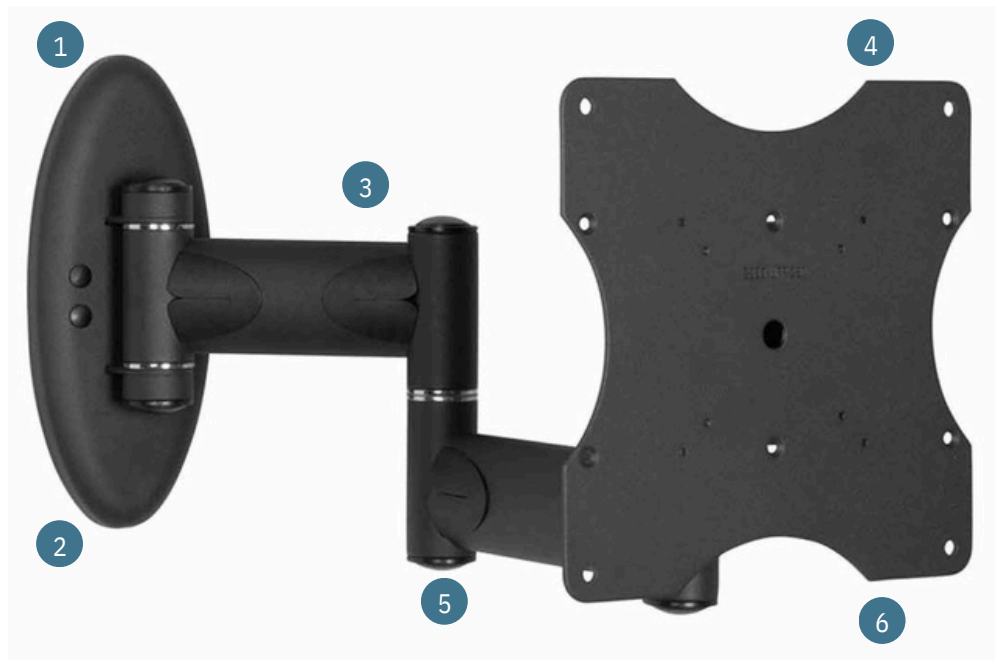
ITEM: AM50-B

WEIGHT CAPACITY:  
50 LB. / 22.68 KG

The AM50-B is a single stud, dual arm swingout mounting solution for flat-panel displays. Single stud installation saves installation time and allows for integration into any space. 360° rotation and 90° of swivel ensure that displays are shown at the most optimal viewing height for any audience. The AM50-B is also OSHPD certified and UL certified demonstrating some of the safest mounting solutions available for integrators.

## FEATURES

- 1 OSHPD approved for highest earthquake safety ratings
- 2 Single stud installation time saving solution
- 3 Dual arm swing out up to 16.9" from wall
- 4 Maximum VESA pattern of 200 x 200 mm
- 5 Radial Glide™ for smooth viewing angle adjustments
- 6 Supports displays up to 50 lbs.



## SPECIFICATIONS

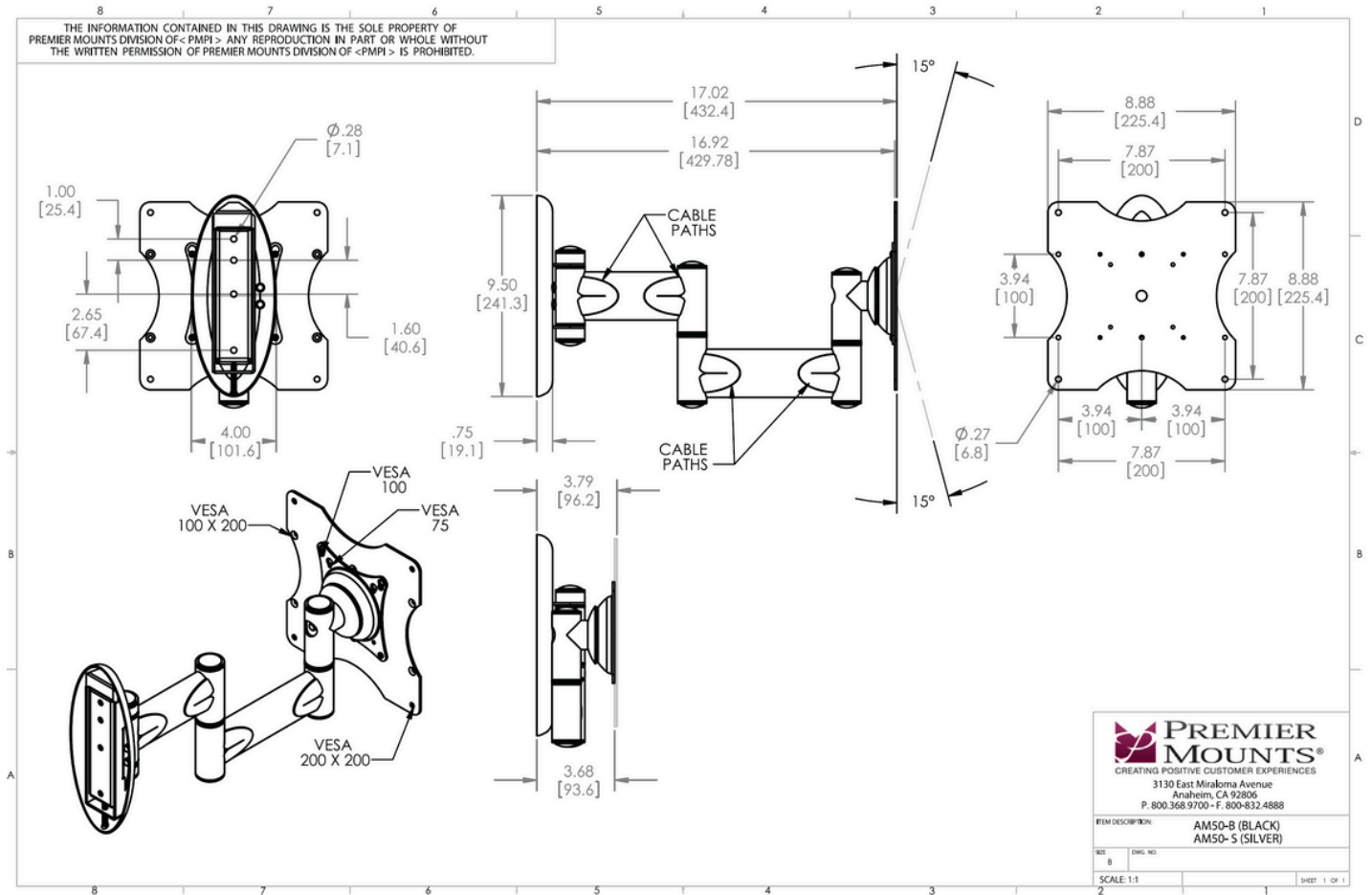
WEIGHT	COLOR	WEIGHT CAPACITY/MOUNT	MOUNTING PATTERN
11.1 lb.   5.03 kg	Black	50 lb.   22.68 kg	75 x 75 mm (Min), 100 x 100, 200 x 100, 200 x 200 mm (Max)

WIDTH x HEIGHT x DEPTH	WARRANTY
8.88 in. x 8.88 in. x 3.7 in.   225.55 mm x 225.55 mm x 93.98 mm	Lifetime

## PACKAGING

WIDTH x HEIGHT x DEPTH	CONTENTS
10.8 in. x 5.8 in. x 11 in.   274.32 mm x 147.32 mm x 279.4 mm	Mount (x1), Universal Hardware Pack (x1), Instruction Manual (x1)

## ARCHITECTURAL DRAWING



Call us at (833) 351-5333  
Visit us: [www.elevate-b2b.com](http://www.elevate-b2b.com)

### Contact Elevate B2B Today

Your trusted partner for hospitality TVs, digital signage, and commercial display solutions. From installation to supply chain support, Elevate B2B delivers the technology and service your property needs.